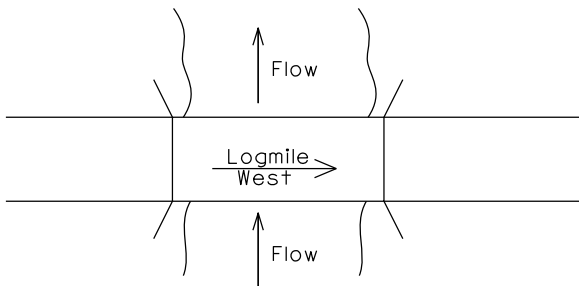
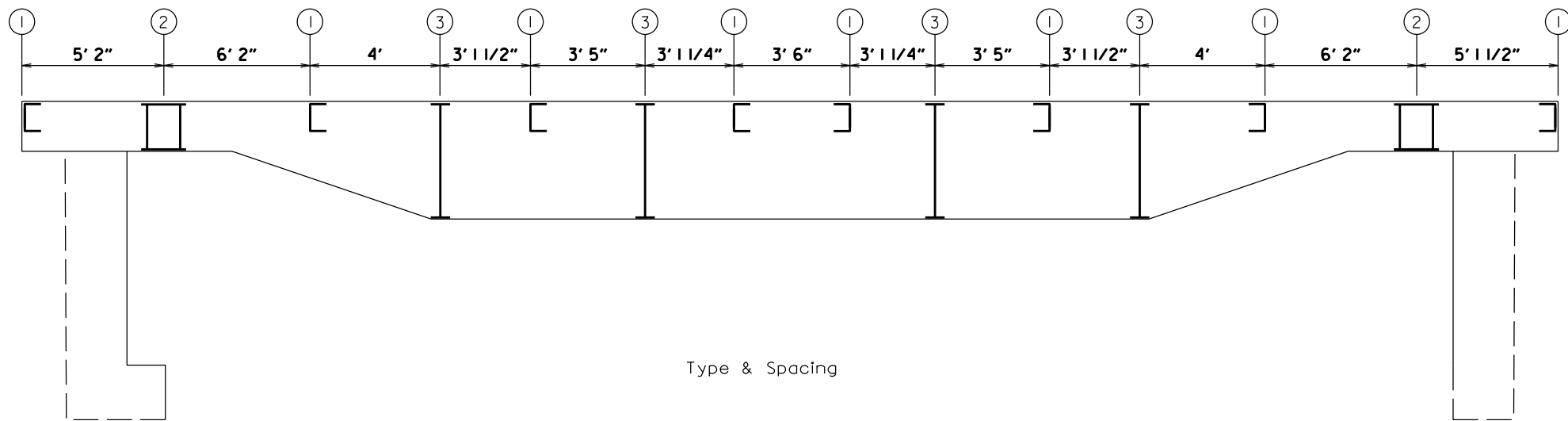


PROFILE



*Not to Scale

Bridge No. 20476	Dist. 5	Co. 32/Indep.
Logmile 2.09	Rt. 11	Sect/Zone - I
Date Drawn 04/19/07 Date Redrawn 04/01/13 By: KBL		



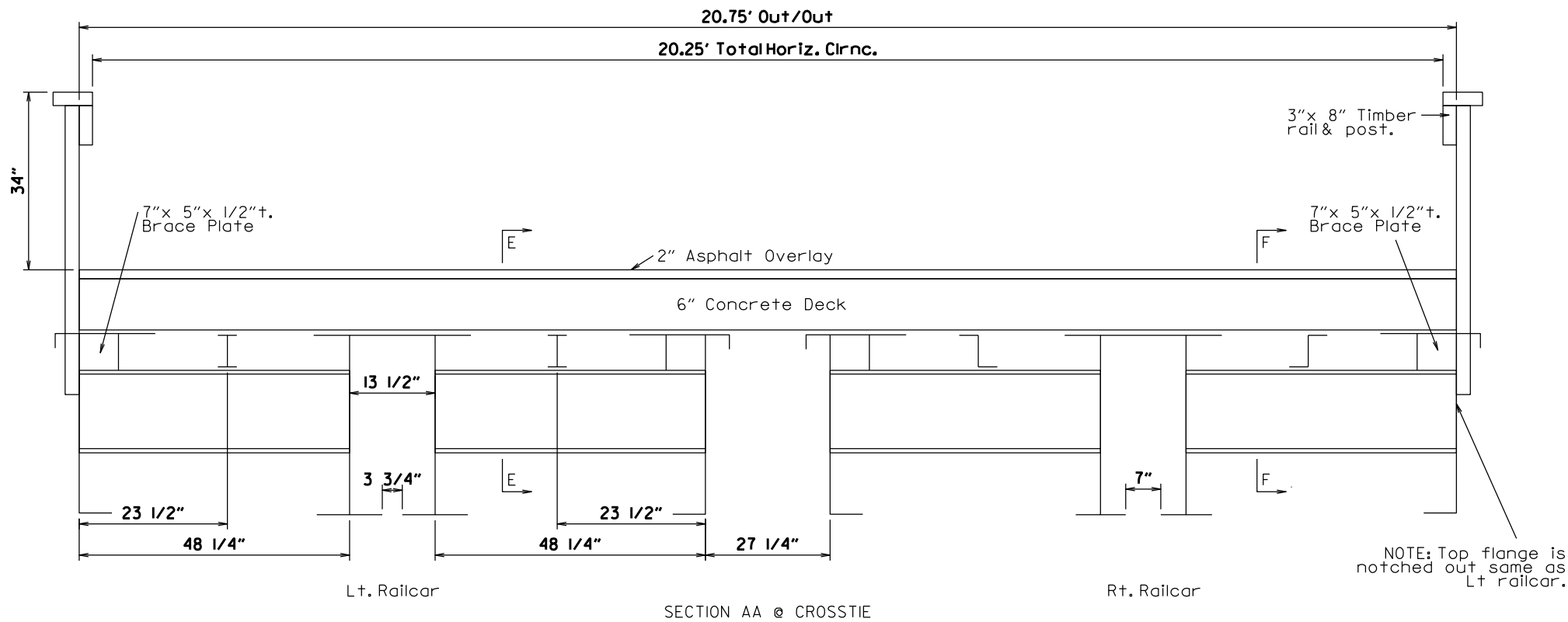
Abut. #1

Abut. #2

- ① Crosstie
- ② Bolster
- ③ Floor Beam

*Not to Scale

Bridge No. 20476	Dist. 5	Co. 32/Indep.
Logmile 2.09	Rt. 11	Sect/Zone - I
Date Drawn 04/19/07 Date Redrawn 04/01/13 By: KBL		

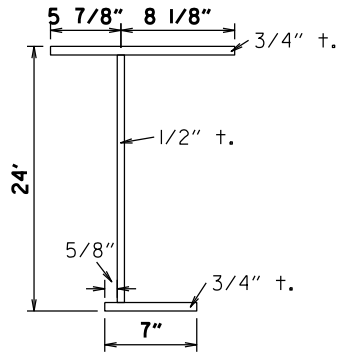


*Not to Scale

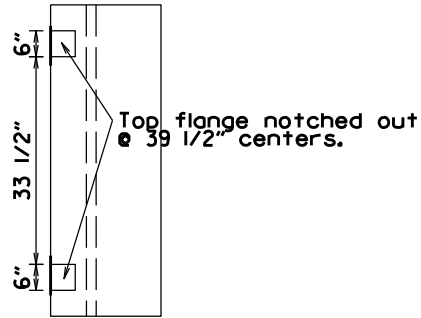
Bridge No. 20476	Dist. 5	Co. 32/Indep.
Logmile 2.09	Rt. 11	Sect/Zone - I
Date Drawn 04/19/07 Date Redrawn 04/01/13 By: KBL		

DETAILS OF SECTION AA @ CROSSTIE

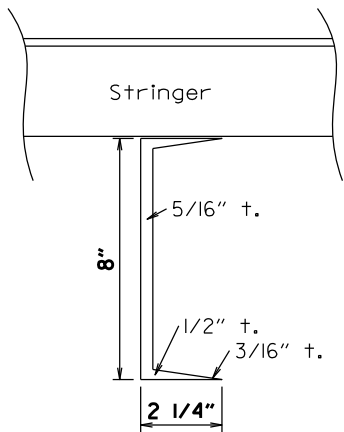
Lt. Railcar Details



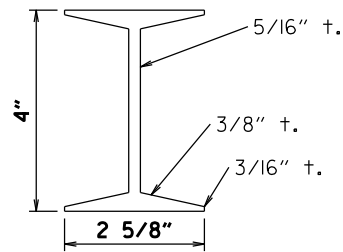
Detail of Ext. Longit.
Girder of Lt. Railcar



Top View of Ext.
Gird. of Lt. Railcar

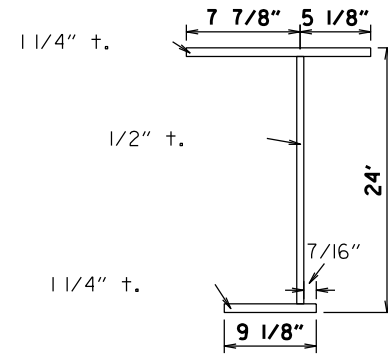


Section EE

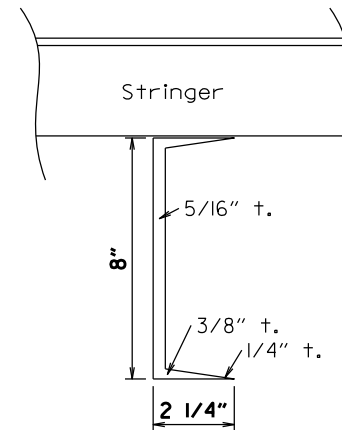


Detail of Stringer
@ Lt. railcar

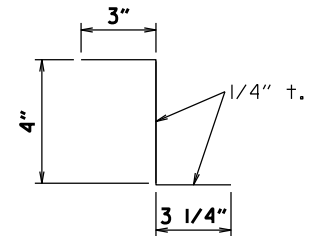
Rt. Railcar Details



Detail of Ext. Longit.
Girder of Rt. Railcar



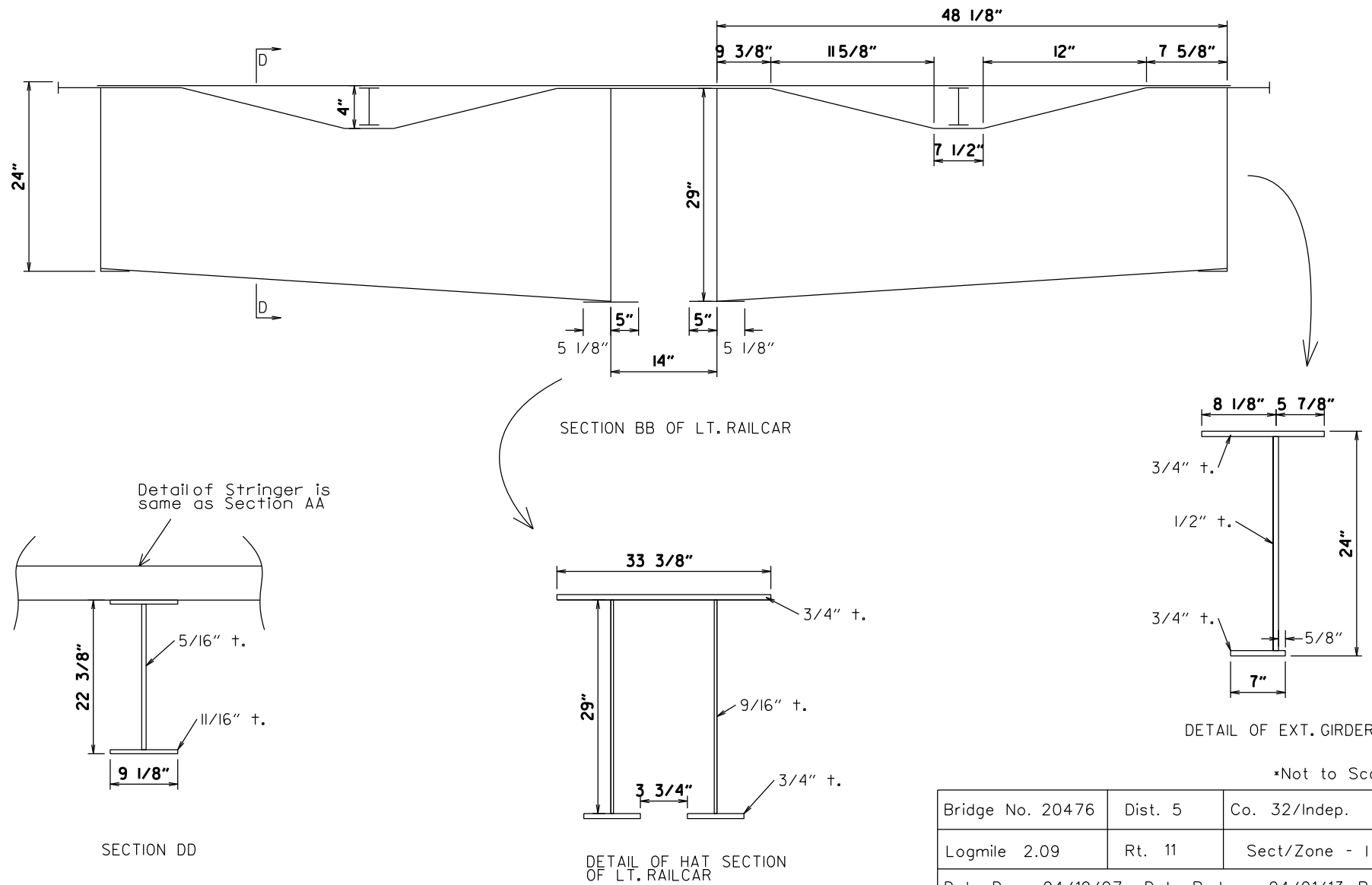
Section FF



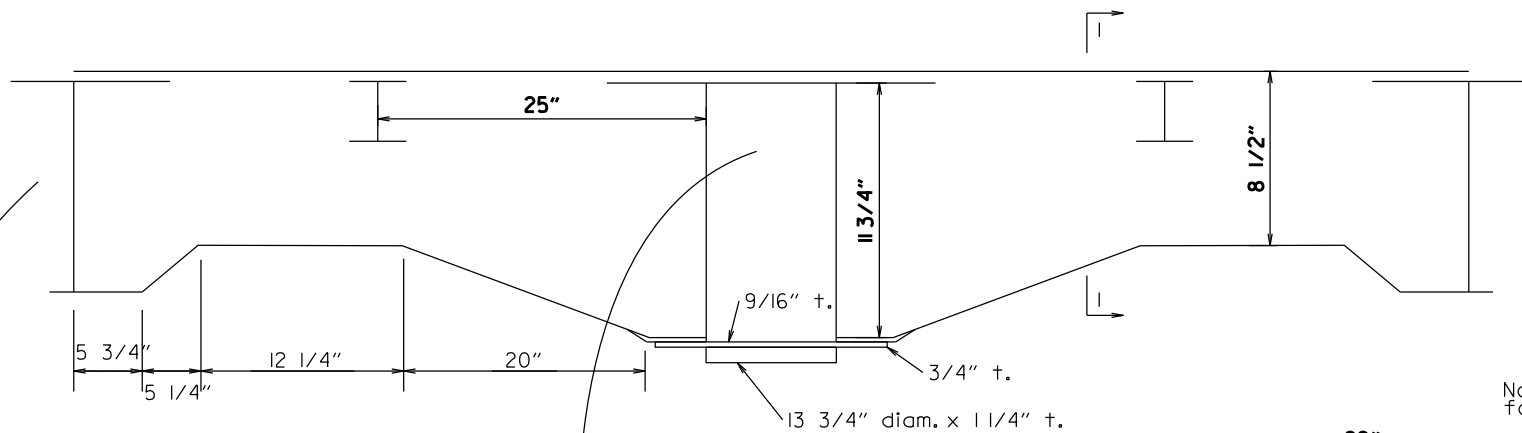
Detail of stringer
of Rt. railcar.

*Not to Scale

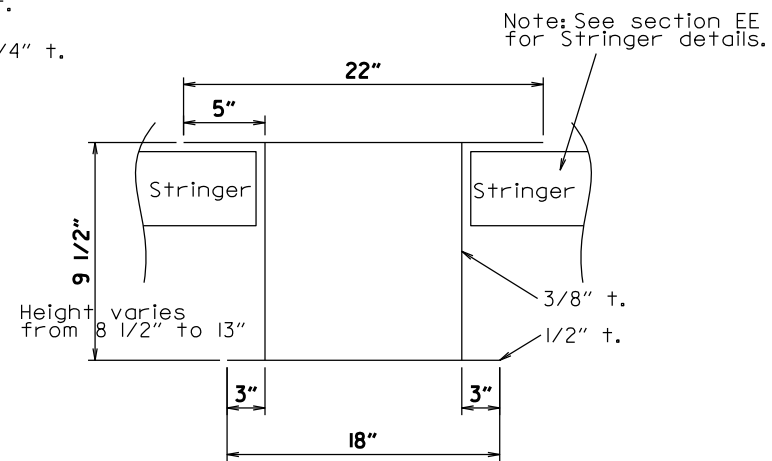
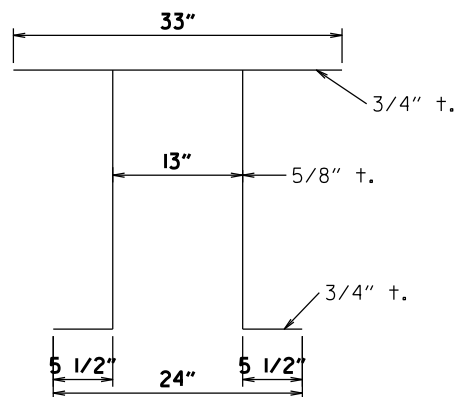
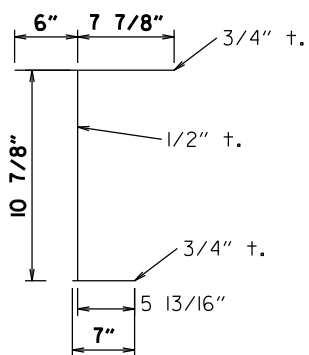
Bridge No. 20476	Dist. 5	Co. 32/Indep.
Logmile 2.09	Rt. 11	Sect/Zone - I
Date Drawn 04/19/07 Date Redrawn 04/01/13 By: KBL		



Bridge No. 20476	Dist. 5	Co. 32/Indep.
Logmile 2.09	Rt. 11	Sect/Zone - I
Date Drawn 04/19/07 Date Redrawn 04/01/13 By: KBL		



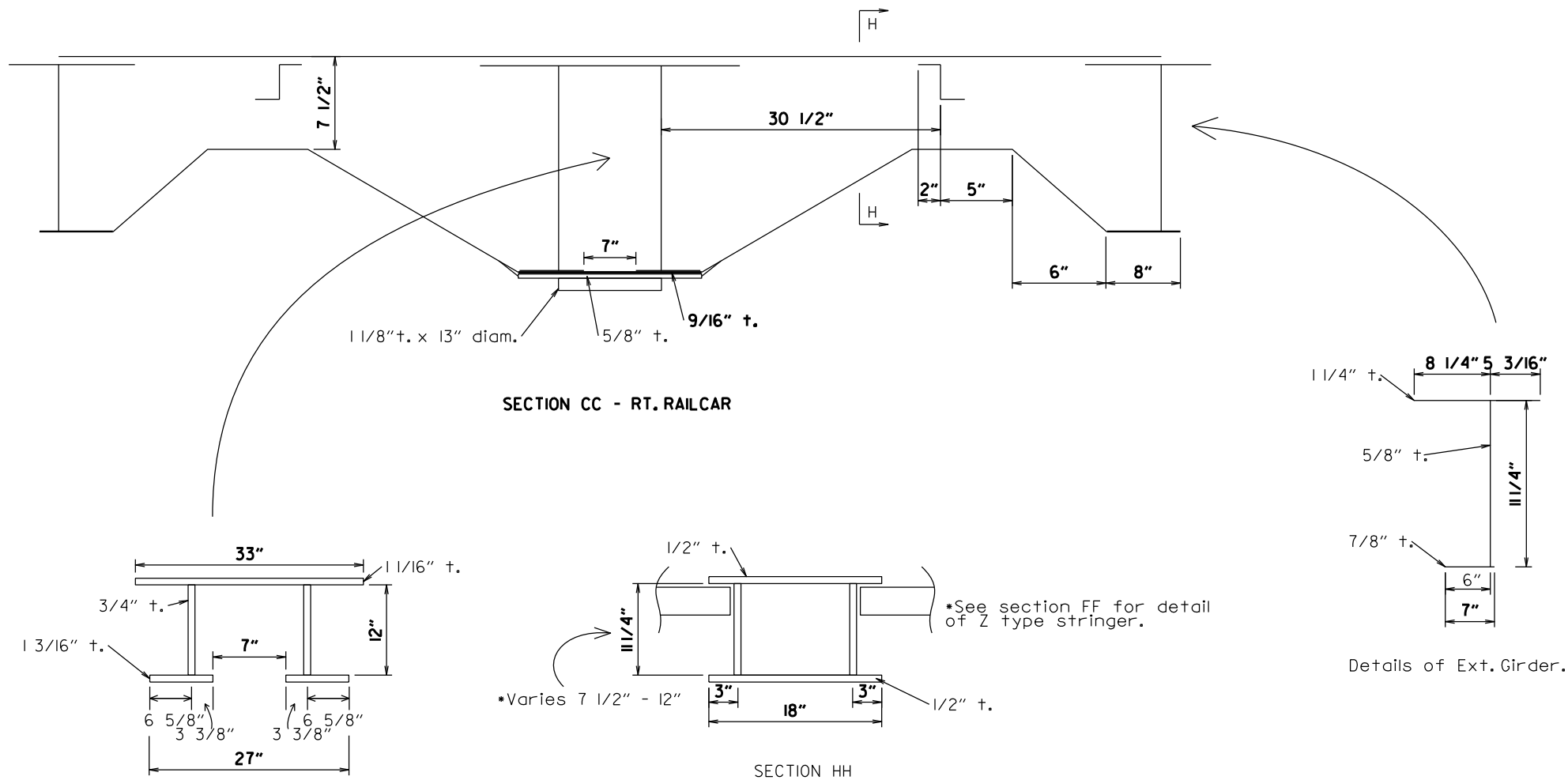
SECTION CC OF LT. RAILCAR



Section II

*Not to Scale

Bridge No. 20476	Dist. 5	Co. 32/Indep.
Logmile 2.09	Rt. 11	Sect/Zone - I
Date Drawn 04/19/07	Date Redrawn 04/01/13	By: KBL



SECTION CC - RT. RAILCAR

HAT SECTION

SECTION HH

Details of Ext. Girder.

*Not to Scale

Bridge No. 20476	Dist. 5	Co. 32/Indep.
Logmile 2.09	Rt. 11	Sect/Zone - I
Date Drawn 04/19/07 Date Redrawn 04/01/13 By: KBL		